

## Turbo charger housing water side

<b>Application:</b>	Rebuild and repair of leak at in-/outlet areas
<b>Place:</b>	France
<b>Date:</b>	April 2007
<b>Job and report done by:</b>	ETS Tiano & Wencon, Denmark
<b>Wencon products used:</b>	Hi-Temp Green, Cleaner, appl. tools



1.& 2.

5mm holes found at the in/out's and erosion areas, in about 10 mm depth.



3. To make a proper surface preparation, areas were sandblasted to SA 2,5 -75 microns.



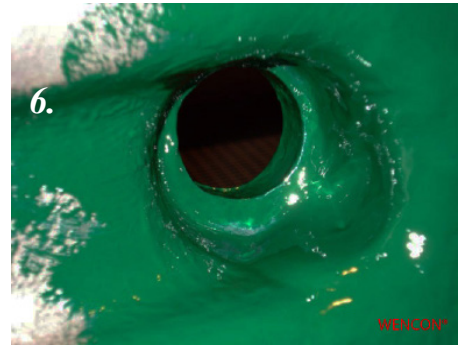
4. & 5.

Wencon Cleaner is used to ensure, there is no grease at the surface, before starting the application with Wencon Hi -Temp.



6. & 7.

Holes and grooves are filled, layer by layer, with Wencon Hi - Temp until all holes and grooves are minimum original size.



8. After final layer, housing is left to cure over night.



9. Using rough emery paper, the application is grinded to original shape.



10. Final result.

Ready for many years of service again.

